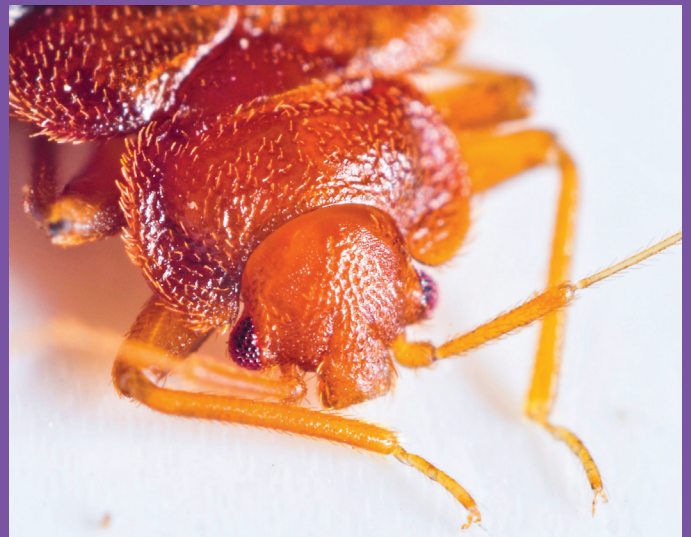




California Bed Bug Fumigation Planning Guide for Tent Fumigation

- Fumigation Prep Calendar & Checklist
- Food & Consumables Checklist
- How to Use Nylofume Bags
- Additional Details: Every Home Is Unique
- Fumigation FAQs
- Avoiding Reinfestation



In addition to the work performed by your fumigator, you will need to help prepare your home for the fumigation.

FUMIGATION PREP
CALENDAR &
CHECKLIST

This timeline is to be used as a guideline and may vary based on your location and pest management service. It is the responsibility of the homeowner to have all tasks on this checklist done before the crew arrives. Failure to do so may postpone the fumigation. Confirm necessary activities and timing with your pest management professional.

As soon as possible

- ☐ Make accommodation arrangements for family and pets.
- ☐ Make arrangements for shoes and personal mobility devices, such as wheelchairs, walkers, baby strollers, child car seats and cars that must be taken with you during the fumigation, to be fumigated before your home is fumigated, or obtain non-infested replacements to use while these items remain in the home during the fumigation.
- ☐ Make arrangements for pet cages, retractable leashes and other pet items that cannot be washed and dried in a dryer to be fumigated before your home is fumigated, or obtain non-infested replacements to use if needed while these items remain in the home during the fumigation.
- ☐ Block areas where pets, feral animals and wildlife might hide in/under structures.
- ☐ Schedule shut-off and post-fumigation restoration of your gas service at least 48 hours in advance.* In some areas, three to five days' notice is required.
- ☐ Make arrangements for cars and vehicles that you use to be fumigated before or while your home is fumigated, and make arrangements for rental vehicle(s) if needed.
- ☐ Make security arrangements if needed.*
- ☐ Hold your mail service if needed.

*If not already arranged by your pest management professional.

Two to three days before

- ☐ Obtain light-colored or clear plastic bags or plastic bins, or new luggage to pack belongings needed during the fumigation to prevent bed bugs infesting these items as you pack. As an alternative to bagging, you may consider removing items at your discretion.
- ☐ Remove or double-bag unsealed food and medicines.* See the "Food & Consumables Checklist" on Page 4 for helpful information.
- ☐ Make house key arrangements with your pest management professional.
- ☐ Move indoor and outdoor potted plants away from your home.
- ☐ Prune any plants or trees touching/encroaching the outside of your home if structure is to be tented.
- ☐ Water the soil up to 18 inches from the outer walls of your home if structure is to be tented.
- ☐ Retract all awnings.
- ☐ Return all signed contracts to your fumigation and/or pest control or pest management company.

*Special bags are used and are available from your pest management professional. See "How to Use Nylofume Bags" on Page 6 for instructions.

One day before

- ☐ For all fabric items, including clothing, blankets, pillows, stuffed toys and pet bedding, that will be taken out of the residence before the fumigation, wash in hot (140° F) water in clothes washer, dry in tumble clothes dryer set on "hot" setting for at least 30 minutes, or dry clean items before returning them to the fumigated residence.
- ☐ Pack belongings needed during fumigation in light-colored or clear plastic bags or plastic bins, such as sweater boxes, or new luggage not previously stored in the infested residence.
- ☐ Do not place washed or packed items on furniture and flooring (such as carpets and rugs) that may be infested with bed bugs. Place packed items on hard smooth surfaces, such as a tile floor in bathroom, in a shower, or in a bathtub, until they can be removed from the residence.

- ☐ Bring as few items as possible when leaving the residence for the fumigation.
- ☐ Water the soil next to the foundation.
- ☐ For mattresses (excluding waterbeds) and pillows completely enveloped in waterproof coverings, do one of the following:
 - Open the seal of the waterproof covering, or
 - Remove the mattress or pillow from the space to be fumigated if the waterproof covering cannot be opened.
- ☐ It is recommended to remove window air conditioning units and close the window for window-mounted units. Wall-mounted units can be taped and sealed over to aid gas retention.
- ☐ Notify neighbors to make them aware of your upcoming fumigation treatment.
- ☐ To allow access for tenting, move cars and vehicles not being used the day of fumigation several feet away from the structure.
- ☐ You may also have one vehicle fumigated the day before with any and all belongings that will be taken with you inside, such as clothing, pet items, purses, backpacks, toys and phones. Any clothing or linens that are not fumigated the day before should be put in the dryer for at least 30 minutes on “hot” setting and put into a bed bug-free container just prior to leaving.

*If waterproof covers have built-in air vents, they do not need to be opened.

The day of fumigation

- ☐ Leave vehicles to be fumigated. The fumigator must be able to open the doors and trunk to inspect vehicles before fumigation. Vehicles to be fumigated may remain inside your garage but should not be left in outdoor areas that will interfere with tarping your house.
- ☐ Provide house keys to your pest management professional if needed, as well as the best way to contact you during the fumigation.
- ☐ Evacuate all people, pets and plants from the structure. Take pets to boarding or other location. The pets should be transferred to new travel cages or housing known not to be infested with bed bugs to remove them from the residence prior to the fumigation.
- ☐ Confirm gas company restoration appointment.*
- ☐ Turn off automatic timers, sprinkler systems, air conditioning, etc.
- ☐ Turn off electrical heating elements such as those in heaters, computers, pianos, organs, pet habitats, etc.
- ☐ Extinguish all pilot lights (hot water heaters, ranges, ovens, dryers, etc.).**
- ☐ Open plastic storage bins and totes in the living areas.
- ☐ Open operable internal doors, furniture with large voids (such as wardrobes, etc.), cabinets, drawers, closets and appliances (such as washers, dishwashers, dryers, microwave or conventional ovens, etc.).

*If not already arranged by your pest management professional.

**In California, this is handled by the gas utility.

After the fumigation

- ☐ Follow your state’s regulations and don’t re-enter your home until it has been tested and certified for re-entry by a licensed fumigator.
- ☐ Meet with the gas company to restore service.* Make sure not to remove the clearance notice on the gas meter, as the gas company will need it to turn the gas back on.
- ☐ Turn back on any devices and timers.
- ☐ Open all Nylofume bagged items in well-ventilated areas.
- ☐ It is **not** necessary to wash dishes, linens, clothing, etc., as the fumigant is a gas that will dissipate from the structure and its contents.
- ☐ Enjoy the peace of mind that the bed bugs are gone.

*If not already arranged by your pest management professional.

Before your home is treated with a fumigant, all consumable items in unsealed containers (such as food, medicine, pet food, beverages and candy) need to be protected in special bags or removed from the structure. Check with your pest management professional to find out which method is recommended for you.

What to bag or remove

YES, bag or remove these items:

Medicine, tobacco, vitamins and other ingestible pills, supplements and lozenges if not sealed in glass, plastic or metal jars or cans with the original manufacturer's seal intact



Pet food and animal feed in bags and boxes



Any food, feed, drugs and medicines if not sealed in glass, plastic or metal bottles, jars or cans with the original manufacturer's airtight seal intact



Chips, pasta, bread, cereals, rice, cookies, crackers and any other items packaged in plastic, paper or cardboard bags or boxes, even if they have never been opened



Beverages, snacks, sauces, drugs, medicines or other items in metallic foil-lined containers such as pouches, boxes or blister packs



Anything in resealable containers, including plastic containers, such as milk, butter, sour cream and cottage cheese



Eggs, fruits, vegetables and any other forms of produce



Don't forget about these items:

- Any food, feed, drugs, tobacco products and medicinals NOT sealed in glass, plastic or metal bottles, jars or cans with the original manufacturer's airtight seal intact.
- Spices without their original manufacturer's airtight seal intact.

Examples to guide you as you prepare for fumigation:

NO need to bag or remove these items:

- Any food, feed, drugs, tobacco products and medicines if **sealed** in glass, plastic or metal bottles, jars or cans with the **original manufacturer's airtight seal** intact (examples: unopened 2-liter soda/pop, liquor, beer or wine bottles).
- Dental hygiene products (including toothpaste, mouthwash, dental adhesives and whitening products).*
- Shampoo and soaps.*
- Cosmetics, including lipstick.*
- All externally applied lotions and ointments.*
- Water and ice cubes.*

*Includes opened containers

Make sure to check:

- ☐ Cupboards
- ☐ Refrigerator(s)
- ☐ Freezer(s)
- ☐ Kitchen or dresser drawers where food or medications may be stored
- ☐ Nightstands
- ☐ Children's rooms
- ☐ Office desk drawers
- ☐ Medicine cabinet(s)
- ☐ Liquor cabinet(s)
- ☐ Pantries or bulk food storage areas in the garage or basement

What you'll need

If you're bagging items so they can stay in the home:

- You will use Nylofume bags, which are specially designed to protect your unsealed food and medicines. They are available from your pest management professional.

If you're removing items from the home, the following might be helpful:

- Plastic containers with lids to store food
- Plastic bins or totes for nonperishables

It is the responsibility of the homeowner to have all items on this checklist done before the crew arrives. Failure to do so may postpone the fumigation. Confirm necessary activities and timing with your pest management professional.

All items such as food, feed, drugs (including tobacco) and medicines not adequately packaged (including those items in refrigerators and freezers) must either be removed from the structure being fumigated or sealed in protective Nylofume bags. The Nylofume bags should be doubled-up before you fill them with items that need protection.

Please follow these instructions carefully

1. While bags are still empty, place one inside another. Double-bagging helps ensure effective protection.



2. Place items inside the inner bag. Do NOT overfill — leave clearance on top for adequate closure of the bags.



3. Twist the top of the inner bag.



4. Fold once and secure the fold in place by using tape or a twist tie.



5. Repeat steps 3 and 4 with the outer bag.



6. Check the seal by pressing gently against the sides of the bag and listening for air leaks. No air should be able to escape.



Helpful tips

- Try not to purchase extra food from the grocery store. The more food you have, the more you will need to bag or remove.
- Cold and frozen foods in Nylofume bags can be left in the refrigerator and freezer. Remove shelves from the refrigerator and freezer to make it easier to stack bags inside.
- Do not use Nylofume bags to store clothing, toys or other nonedible items prior to fumigation. The fumigant completely aerates from these items, so it is unnecessary to place them in bags.

IMPORTANT: Keep Nylofume and other such bags out of children's reach. If you have any questions, make sure to contact your pest management professional.

Every home is different. Below are items that may need special attention. As always, check first with your pest management professional for confirmation and more information.

ADDITIONAL
DETAILS
EVERY HOME IS UNIQUE



Aquariums

Be sure to check with your pest management professional on how to prepare aquariums for fumigation.

Awnings

Retract all awnings to protect them from the weight of the tarps used for tenting the home.

Blinds and drapes

Your windows may be opened to allow the fumigant gas to move freely. Raising blinds and opening drapes help the process go more quickly.

Burglar alarms

If any burglar alarms are to be left on, leave operational instructions and your contact information with your pest management professional.

Connected structures

Construction elements connecting buildings, such as conduits and drainage systems, may allow the passage of fumigant from the structure being fumigated to an adjacent structure. Identifying all possible connections between structures is an essential aspect of a fumigation treatment. **Let your pest management professional know if you have:**

- Central vacuum lines
- Polyvinyl chloride (PVC) or metal pipes that house electrical, telephone or cable lines above or below ground
- French drains, gutter systems and landscape drains
- Hollow block fences (may be covered with stucco), archways or breezeways

Exterior doors without locks

All exterior doors to the building being fumigated (including the water heater cabinet) must be secured against unauthorized entry. If no clasp or other locking device exists, the law may require nailing or other methods to secure these doors.

Keys for exterior door locks

- The law requires all exterior doors, including garage doors, be locked and secured during fumigation. Fumigators use additional locking devices, called secondary locks, on exterior doors that cannot be secured by other means.

- Because fumigators need access to the inside of your home for preparation, **you are required** to provide keys to the pest management professional for all exterior locked doors, including outdoor sheds within the fumigated space.
- Keyless entryway locks can be temporarily recoded for the fumigation to meet security requirements.

Outdoor gas grills

If structure is being tented, turn off gas at the tank valve for outdoor grills that will be in the fumigated space (covered by tarps).

Roof-mounted structures

To be effective, tarps used for fumigation are heavy. During tenting, roof-mounted items (such as antenna guide wires, satellite dishes, security cameras, weather vanes, etc.) risk being damaged. These items may need to be removed, so check with your pest management professional before the fumigation.

Swimming pools

The gate to a pool area may need to be left open. If you wish to have the property guarded, check with your fumigator for more information.

Tree limbs over roof

If structure is being tented, tree limbs growing over the roof should be trimmed to allow room for workers to cover the roof with the tarp.

Valuables

Most fumigation companies are not responsible for security against vandalism, theft or breaking and entering before or during the fumigation and aeration procedure or after the property is released for re-entry. It is recommended you remove any highly valuable items from the premises prior to the fumigation.

Walk-in safes/security areas

All areas within the structure must be made accessible, including closets, garages and safes. If you have a walk-in or large safe, you may need to be present to open the safe for the fumigator's inspection before fumigation and after aeration.

Waterbed mattresses

No special preparation is needed for waterbed mattresses, and they can be left in the house as is.

Weather

Fumigation cannot be performed if there is severe weather that would affect fumigation worker safety and the successful completion of the fumigation. In these situations, the fumigation would need to be rescheduled.

When can I re-enter my home?

The fumigated structures must not be re-entered until they have been tested and certified for re-entry by a licensed fumigator. Specialized equipment is used to test the air to ensure the fumigant has dissipated. In some states, such as California and Florida, a notice will be posted on the door when the building is certified for re-entry.

Should I shut off my electricity or water service?

No. Electricity and water must be available as it will be necessary to run fans during the fumigation process. Gas service, however, will need to be shut off prior to fumigation. In some areas, three to five days' notice may be required to schedule this appointment, so leave enough time to make arrangements.

Why does my fumigator need a key to my house and garage?

The fumigator must have access to all rooms and compartments inside of the structure to perform fumigation services.

Why do you recommend watering the soil around my home?

Thoroughly watering the soil up to 18 inches from the outer walls of your home and the ground around shrubs and plants located adjacent to the structure can help protect them during the tenting process. Watering should be done the day before fumigation.

Does a fumigation treatment leave any surface residues?

The gas used to fumigate your home does not remain in the home after fumigation. It completely dissipates.

Can the air conditioning be left running during fumigation?

- Typically, air conditioning is not left on during the fumigation. If you have special circumstances, such as keeping a wine cellar cool, arrangements will need to be made with your pest management professional.
- Window air conditioning units should not be left on, as they will be covered by the tarps and unable to function.

What precautions are taken to ensure my family's safety?

Your professional licensed fumigator will do four things:

- Release a warning agent to deter entry to the home.
- Secure doors on your home by using deadbolts or additional locking devices to prevent unauthorized entry.
- Open all cupboards, drawers, trunks and vaults to ensure the fumigant gas quickly dissipates from your home.
- Use specialized equipment to test the air to ensure the fumigant has dissipated so you may re-enter your home. The fumigant level must be below the U.S. Environmental Protection Agency (EPA) requirement (1 ppm or less) in all breathing zones. Therefore, as soon as the fumigator clears the structure, you may return to your home.

Why do I need to pack my belongings during the fumigation in light-colored or clear plastic bags or plastic bins?

This is recommended so you can see if bed bugs are reinfesting the items as you pack your belongings you will be taking with you during the fumigation. Bed bugs cannot easily be seen moving on dark-colored surfaces.

Post-fumigation, my cupboards and drawers were left open. Why?

All cupboards, drawers, trunks and vaults must be opened to ensure the fumigant gas quickly dissipates from your home during aeration.

When you return home after the fumigation, it is important to avoid reinfesting your home with bed bugs.

AVOIDING
REINFESTATION

While fumigation can eliminate a bed bug infestation, bed bugs will remain a problem if they are brought back into a structure after fumigation. Your pest management professional can help you guard against new or recurring bed bug problems. Those recommendations may include steps to take to avoid reinfestation, what to watch for when traveling or at home, and the need for regular professional inspections following the fumigation.